

Further Note on the Clavigerine Species *Triartiger reductus* NOMURA  
(Coleoptera, Staphylinidae, Pselaphinae)

**Shûhei NOMURA**

Department of Zoology, National Science Museum (Nat. Hist.),  
3–23–1 Hyakunin-chô, Shinjuku, Tokyo, 169–0073 Japan

**Abstract** The male characters of the clavigerine species, *Triartiger reductus* NOMURA described from the Tsushima Isls., western Japan are noted.

*Triartiger reductus* NOMURA was described on the basis of a female collected on Mt. Mitake, the Tsushima Isls., Nagasaki Pref., and the male character has not been known. Recently, Mr. Hideto HOSHINA of Kyushu University kindly gave me a male and a female of this species collected from nearly the same locality as the holotype. The male character of this species is redescribed below.

***Triartiger reductus* NOMURA**

[Japanese name: Tsushima-mifushi-higebuto-arizukamushi]

(Figs. 1–3)

*Triartiger reductus* NOMURA, 1997, *Elytra, Tokyo*, **25**: 435–444.

Male (Fig. 1 A). Length 1.90 mm. Width 0.69 mm. Very similar to female (Fig. 1 B), but antennae (Fig. 2 A) slightly longer than in female (Fig. 2 B), 3rd segment gently slenderer in proportion than in female; elytra about as long as abdomen in dorsal view, slightly longer than in female; mid legs short and robust (Fig. 2 C), trochanters elongate, gently thickened distad, femora short and thick, with a large and sharp spine on posterior side, tibiae elongate, each slightly thickened distad, with a small denticle at apical 1/4 on inner side.

Male genitalia (Fig. 3) weakly sclerotized; median lobe bulbous and slightly broadened apicad in basal part, broad, flattened and narrowed distally in apical lobe, basal foramen opening at ventral side of well constricted and projected basal nodule, endophallus short and indistinct in shape.

*Specimens examined.* 1 male, 1 female, Mt. Mitake, Tsushima Isls., Nagasaki Pref., 16~17-X-1999, H. HOSHINA leg.

*Distribution.* Japan (Tsushima Isls.).

*Remarks.* The male genitalia of this species are very similar to those of *T. urceus* KUBOTA in having the bulbous and gently constricted basal part, and the large

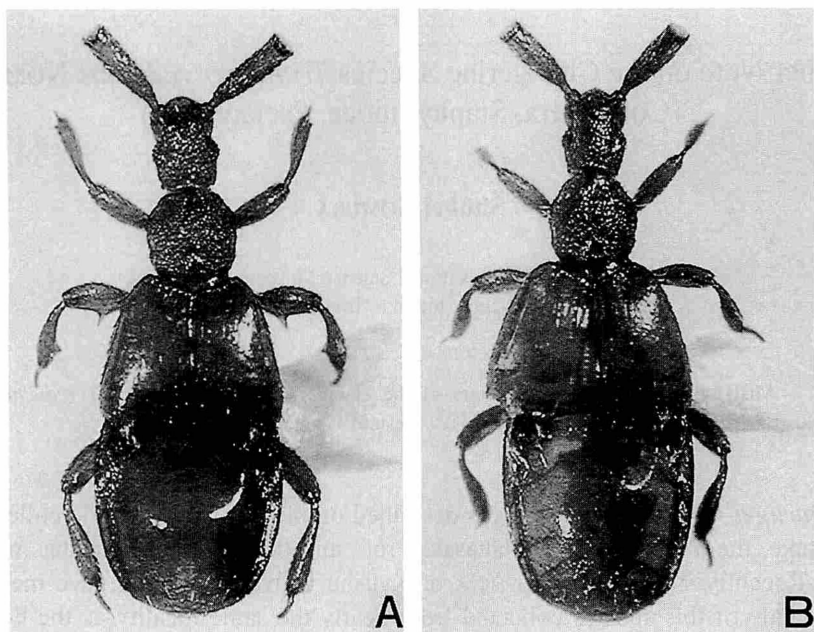


Fig. 1. *Triartiger reductus* NOMURA; A, habitus, male; B, ditto, female (holotype).

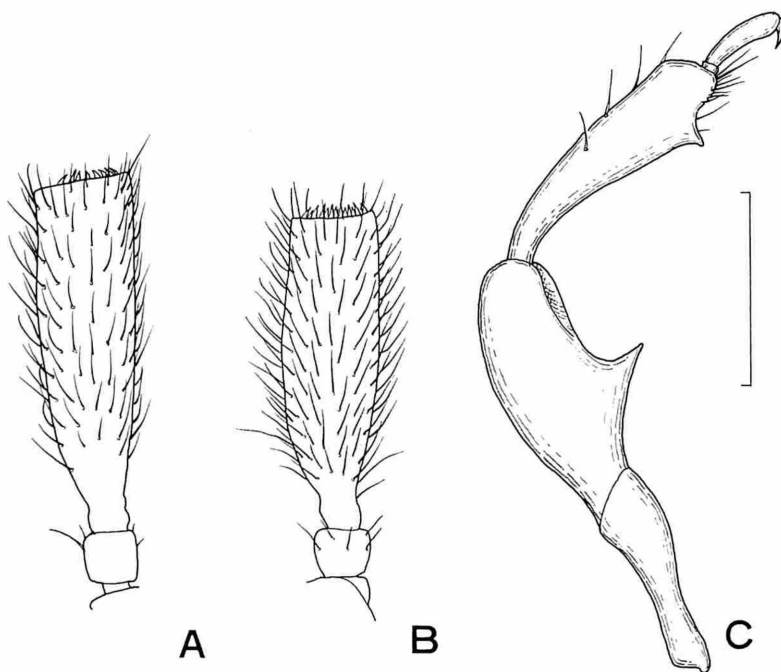


Fig. 2. *Triartiger reductus* NOMURA; A, right antenna, male; B, ditto, female; C, male left mid leg in ventral view. Scale: 0.2 mm.

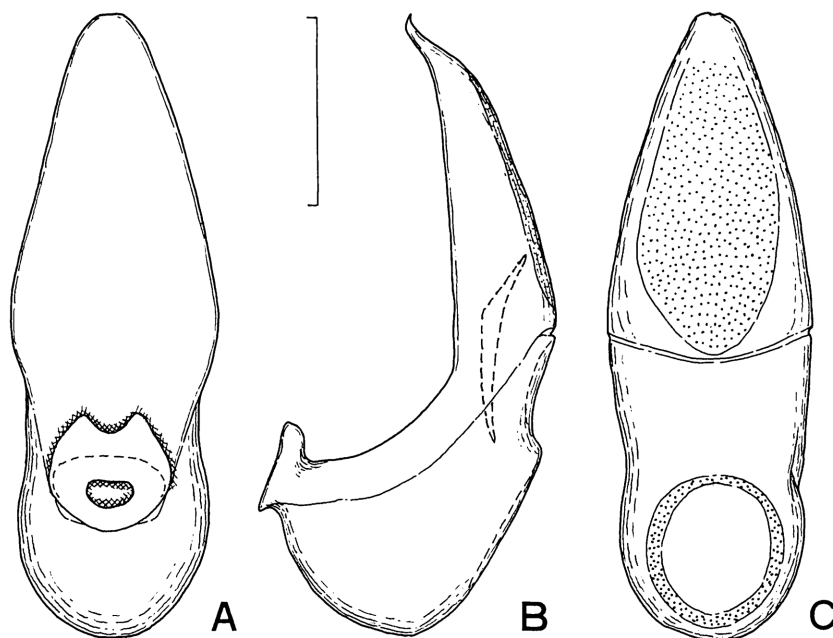


Fig. 3. Male genitalia of *Triartiger reductus* NOMURA; A, ventral view; B, lateral view; C, dorsal view. Scale: 0.1 mm.

and apically narrowed apical lobe. The male character in mid legs of this species is also in accordance with that of *T. urceus*. However, each male antenna is longer and slenderer than in female in this species, whereas each male antenna is shorter and thicker than in female in *T. urceus*.

#### 要 約

野村周平：対馬産ツシマミフシヒゲブトアリヅカムシに関する追記。—— 長崎県対馬御嶽から1頭の雌によって記載された、*Triartiger reductus* NOMURA ツシマミフシヒゲブトアリヅカムシの雄の形質を、九州大学の保科英人氏より恵与された御嶽産1雄に基づいて記録した。本種は雄交尾器の特徴ならびに中脚腿節および脛節に生じる棘状突起の形状において、台湾から知られる *T. urceus* KUBOTA ミフシヒゲブトアリヅカムシによく似ているが、雄の触角が雌のそれに比べてわずかに長く、第3節がより細長い点でミフシとは異なっている。

#### Reference

- NOMURA, S., 1997. A revision of the clavigerine genus *Triartiger* KUBOTA (Coleoptera, Staphylinidae, Pselaphinae) from Taiwan and Japan. *Elytra, Tokyo*, **25**: 435–444.